

Performance highlight



Biological Resources

A society that values sustainable biological resources



Sri Lankan tea farms

Supporting Sri Lankan tea farms to obtain Rainforest Alliance certification

Number of large farms assisted to obtain certification **94 farms** KBC Percentage of certified large farms that have been certified with Kirin's support **Approx. 30%** KBC



Coffee plantations in Vietnam

Supporting coffee plantations in Vietnam to obtain Rainforest Alliance certification

Number of small farms assisted to obtain Rainforest Alliance certification **309 farms** KBC

Others

Use of FSC-certified paper or recycled paper for office paper KB KBC ME **100%**
Response to sustainable palm oil (Except palm kernel oil) KB KBC ME KIW **100%**
Reduction of food waste (compared with 2015 levels) KB KBC ME **-80% (2020)**



Water Resources

A society that values sustainable water resources

Water reduction

Rate of reduction of water consumption rate (Compared with 1990 levels) KB **-49%** (Compared with 2015 levels) LN **4%** (Oceania region*)

Amount of water use (Compared with 2019 levels) KKC **-25%** (Compared with 2015 levels) KHB **-52%**

Water Source Forestation Activities

Number of participants total **Approx. 32,000 people**

Number of water source conservation sites in Sri Lanka tea farms

Number of water source conservation sites KBC **12 locations**



Water Source Forestation Activities

Water source conservation sites in Sri Lanka tea farms

* This region covers the Oceania region where Lion conducts business activities, excluding New Belgium Brewing.

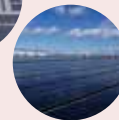
Kirin Group's Environmental Vision 2050

Enrich the Earth with Positive Impact

A Sustainable Society Created Together



Kirin and its broad stakeholders enrich society and the Earth for future generations through positive impact on people and the environment.



Containers and Packaging

A society that circulates containers and packaging in a sustainable way

PET bottles

Ratio of usage of recycled resin for PET bottles KB KBC ME **4.9%**



R100 PET bottles made of 100% recycled PET material



Paper containers made of FSC-certified paper

Paper container

Use of FSC-certified paper for 6-can packs KH KB KBC ME **100%**

Use of FSC-certified paper for gift boxes KH KB KBC ME **100%**

Use of FSC-certified paper for drink boxes KH KB KBC ME **100%**

Use of FSC-certified paper for cardboard cartons for products KH KB KBC ME **100%**



Climate Change

A society that has overcome climate change

GHG emissions reduction

GHG emissions from the entire value chain KG **4,411 thousand tCO₂**

GHG emission reduction rate - Scopes 1 + Scopes 2 (Compared with 2019 levels) KG **-13%**

GHG emission reduction rate - Scopes 1 + Scopes 2 (Compared with 2019 levels) KG **-12%**

Renewable energy

Ratio of renewable energy to electricity used KG **17%**

RE100

CLIMATE GROUP | CDP
RE100 membership, SBT1.5 approved



Installation of large-scale solar power generation facilities

Waste

Recycling at the plants

Recycling rate KB KBC KD **100%**



Next generation

Kirin School Challenge

The number of students total **1,097 people**

